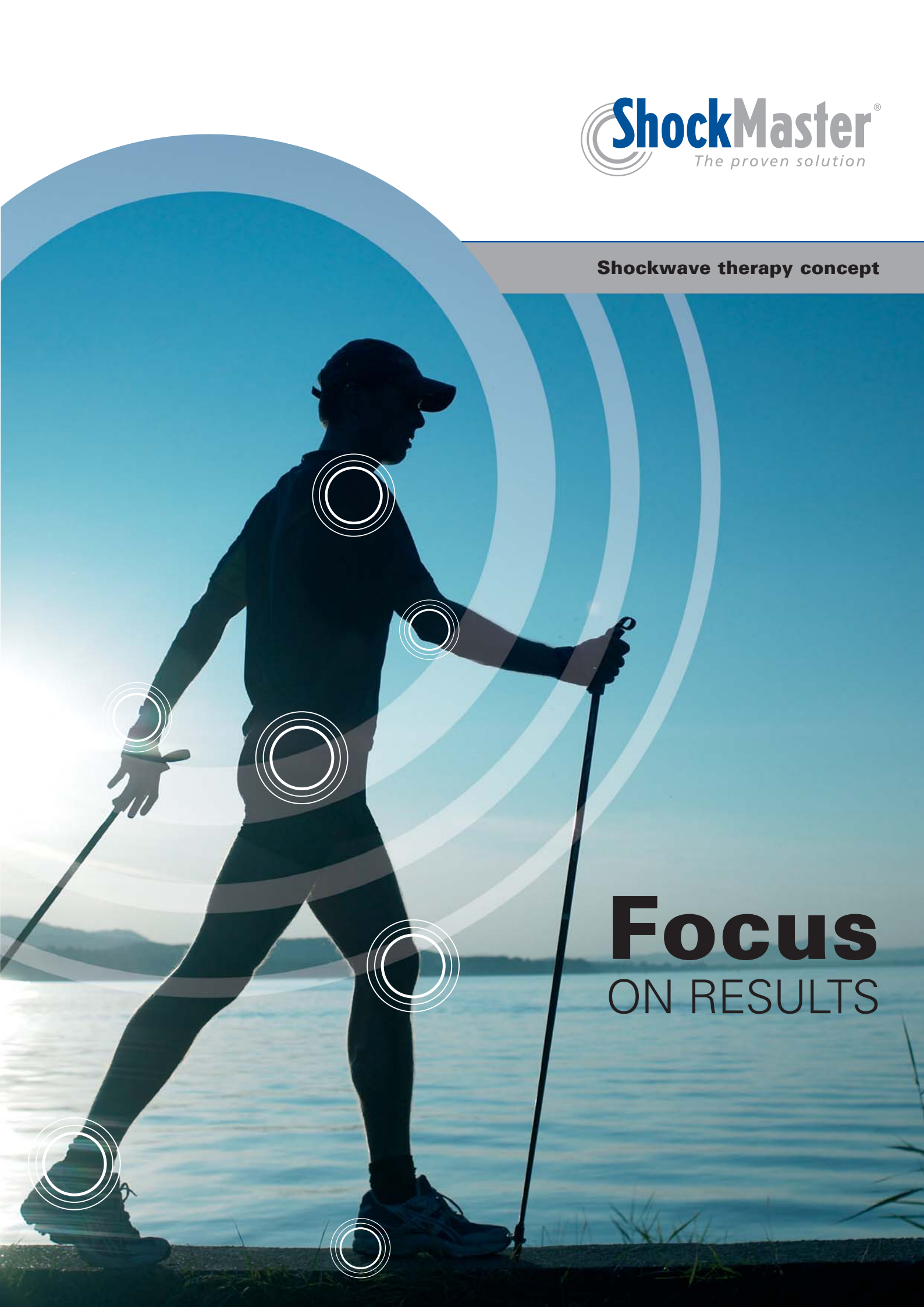


**Shockwave therapy concept**



The image features a silhouette of a person in a running pose, holding trekking poles, against a background of a lake and mountains at sunrise or sunset. Overlaid on the runner's body are several sets of concentric white circles, representing shockwave therapy points, located on the shoulder, elbow, wrist, hip, knee, and ankle. Large, light blue concentric circles are also visible in the background, suggesting the propagation of shockwaves.

**Focus**  
ON RESULTS



### 'MA-X' technology

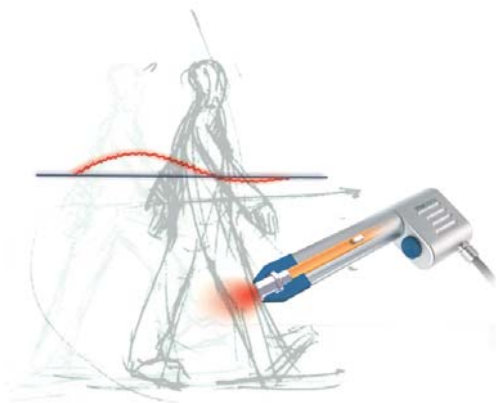
**MA-X technology represents a new synthetic applicator and projectile for improved performance.**

The benefits are:

- More power at tissue surface (first 10 mm) for more effective treatments
- No metal wear, no dust in the hand piece (longer life cycle)
- Shorter treatment time, less hits required per session
- Better energy/pulse stability

# The quality of life is in the quality of treatment

**Painless and innovative treatment for an optimal balance between body and motion.**



**ShockMaster®**  
The proven solution

### **A quick, safe, and successful treatment!**

Extracorporeal shockwave therapy (ESWT) has gained a firm foothold all over the world. After having proven its effectiveness in the disintegration of kidney stones for many decades, ESWT has also found its way into orthopedics, surgery, rheumatology and rehabilitation.

ShockMaster® offers a complete range of shockwave therapy devices for the medical market.

Our mission statement: ShockMaster® wants to be an effective, leading, global partner in innovative, high quality shockwave therapy solutions for the medical market and wants to contribute substantially to the success of its customers.

## What is shockwave therapy?

Shockwave therapy is a modern and highly effective treatment method.

The term shockwave refers to high energy sound waves. In modern pain therapy, these shock waves are conducted from the place of their generation – the shockwave therapy device and handpiece – to the painful body regions, where they apply their healing effects.

Shockwaves accelerate the healing process by activating the body's self-healing capacities. They stimulate the metabolism and improve the blood circulation. Damaged tissue gradually regenerates and eventually heals.

*Professor V. T. Nazarov, 1988*

*“Physiological intrinsic oscillations  
play a key role in muscular  
perfusion and lymphatic drainage.”*

### Shockwave generators: ESWT and RSWT



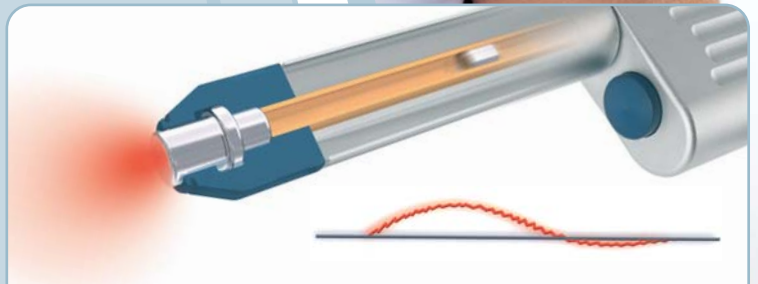
#### **ESWT (Extracorporeal Shockwave Therapy)**

Devices with **focused shockwaves**. Maximum energy is reached at a specific focal point in the body. These devices produce a medium to high energy level (FSWT).

We use an electromagnetic source to generate such focused shockwaves. A divergent cylindrical wave is generated, which is transformed into a convergent spherical wave using a special rotation paraboloid inside the handpiece.

There is also a possibility to “**defocus**” these shockwaves for the application in skin therapy, in this case we speak about **Planar Shockwave Therapy (PSWT)**.

**Unique STORZ Medical cylindrical source**



#### **RSWT (Radial Shockwave Therapy)**

Devices with radial shockwaves. The energy is spread over a large surface area. These devices produce a low to medium energy level.

Pneumatically generated shockwaves are introduced into the body over a large (radial) surface area by means of a movable hand piece. The projectile located in the handpiece is accelerated to high speed by a pneumatic pulse. The therapeutic shockwave, which is generated as the projectile strikes the shockwave transmitter integrated in the hand piece, is introduced by the transmitter surface into the pain region to exert its curative effect.

**Proven STORZ Medical ballistic source**



# Treatment: Fast, safe and effective

## An innovative and profitable

### Patient benefits

Wide range of applications, no anesthetics required, gentle treatment, excellent healing rate, restored mobility and quality of life, affordable therapy. After just 2 or 3 sessions, over 80% of patients report to be pain free or to feel a significant pain reduction.

### Benefits for the therapist

Short treatment sessions, safe application, high patient throughput, satisfied patients, rapid payoff, low follow-up costs and easy to use and maintain.

### How is the therapy performed?

The therapist localizes the pain region and applies gel. He then releases shockwaves as the shockwave therapy hand piece is moved over the pain region in a circular motion.

*Two Dutch manual therapists recently opened a shockwave center together:*

***"ShockMaster® is outstanding for patients with chronic pain. We have comfortably treated many patients, resulting in significant and lasting improvements. Our ShockMaster® unit is an absolutely brilliant innovation!"***

## How does it work?

Shockwaves accelerate the healing process by activating the body's self healing capacities. They stimulate the metabolism and enhance the blood circulation. Damaged tissue gradually regenerates and eventually heals.



### **Radial and ulnar humeral epicondylitis:**

Chronic inflammations are eliminated to ensure successful elbow pain relief. This provides improved elbow mobility and forearm force.



### **(Calcified) shoulder tendonitis:**

the therapeutic objective is to reduce or relieve pain and to eliminate pain-induced mobility restrictions in the affected shoulder. Calcifications causing pain can be disintegrated as well.

## solution for your practice.



### **Patellar tendinopathy/achillodynia:**

both syndromes are chronic, mostly sport induced disorders. The pathologically altered painful tendon section exhibits a relatively large volume. The ShockMaster® devices allow this target volume to be covered in its entirety, thus providing the desired regenerative therapeutic effects.



### **Plantar fasciitis and heelspur:**

shockwave therapy provides a decisive improvement in the clinical development of chronic plantar fasciitis and heelspur. When pain symptoms are eliminated, the load-bearing capacity of the affected foot is rapidly increased.

### **Further indications:**

- Chronic tendinopathies and enthesopathies in general
- Trigger points
- Iliotibial band syndrome
- Shin splints
- Dupuytren's contracture
- Shoulder pain with/without restricted mobility
- Trochanteric tendonitis
- Patellar chondropathy
- Dorsal calcaneal spur
- Cervicalgia
- Tension headache
- Lomalgia
- ...

Ron Mitchel of 'Tennisworld Equipments' London:

***"I thought I would never move again,  
but after only four treatments  
I was back on the court  
playing a tennis match!"***

# SHOCKMASTER® SHOCKWAVE THERAPY PRODUCT RANGE

**State-of-the-art technology, powered by Storz Medical**

**(world wide leader in shockwave therapy solutions since 1987).**

- D-ACTOR® technology
- V-ACTOR® technology
- Biomechanical therapy
- Easy to use and maintain
- Pulses through the hand piece
- Wide range of applicators
- Shock absorber for the therapist
- Practically noiseless
- Versatile range

## INDICATIONS



Disorder	RSWT	D-ACTOR	V-ACTOR	FSWT	PSWT
Calcified tendonitis					
Shoulder pain with/without calcification					
Tendinopathies (Radial/ulnar humeral epicondylitis,...)					
Trochanteric tendonitis					
Patellar syndrome (Jumpers knee)					
Tibialis anterior syndrome					
Achillodynia					
Plantar fasciitis					
Dorsal calcaneal spur					
Enthesopathies					
Acute and chronic cervical/ lumbar pseudoradicular syndrome					
Acute and chronic dorsalgia					
Muscle (sprain, strain, spasm,...)					
Metatarsalgia					
Pseudarthrosis					
Superficial trigger points					
Deep-sited trigger points					
Shockwave acupuncture					
Skin Therapy					
Cellulite					
Matrix Rhythmus Therapy					

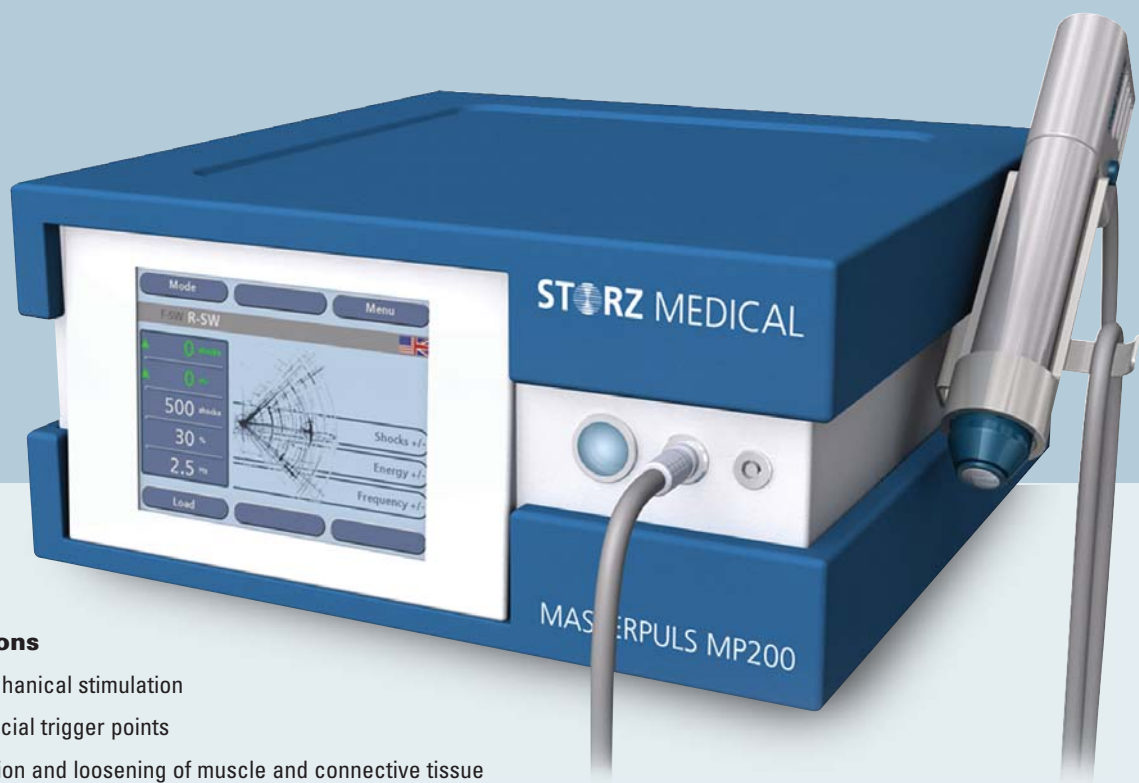
(Caution, this table is not comprehensive)

# MP200

**HIGH TECH radial shockwave therapy system with D-ACTOR® and V-ACTOR® technology**

## **The new RSWT generation with BMS**

High tech device with touch screen technology. High shock frequencies, maximum shockwave introduction into the tissue, optimized application pressure. "Biomechanical Stimulation" (BMS) with D-ACTOR® technology! BMS performed with D-ACTOR® technology is based on the mechanical application of vibrating pulses to tensed, shortened or overstretched muscles and tendons by means of the physiological shock frequencies (18 - 21 Hz) and low vibration amplitudes of the D-ACTOR® shock transmitters.



## **Indications**

- Biomechanical stimulation
- Myofascial trigger points
- Activation and loosening of muscle and connective tissue
- Tendon disorders
- Calcifications
- Acupuncture



## **Facts and figures:**

- Application pressure: 1 - 5 bar, 18,5 MPa
- Shock frequency: 1 – 35 Hz
- Touch-screen operation
- Integrated indication list
- Storage of patient data
- USB-port for data transfer and printing
- 'Biomechanical Stimulation Therapy (BMS)' with D-ACTOR® when you use frequencies of 18-21 Hz
- New unique and patented V-ACTOR® handpiece for 'vibration therapy' as option

# MP<sup>100</sup>

**CLASSIC radial shockwave therapy system with  
D-ACTOR® technology**

**The most convenient shockwave therapy device.**

The MP100 is the proven and powerful shockwave therapy device. Thanks to its wide range of accessories, frequencies and pressure, the MP100 is a versatile unit.



**Indications:**

- Myofascial trigger points
- Activation and loosening of muscle and connective tissue
- Tendon disorders
- Calcifications
- Acupuncture



**Facts and figures:**

- Application pressure: 1 - 4 bar, 14,5 MPa
- Shock frequency: 1 – 15 Hz
- D-ACTOR® technology
- Available in oil compressor and energy compressor configuration

# MP50

**COMPACT and PORTABLE radial shockwave therapy system**

**The perfect entry level shockwave therapy device.**

Compact design with integrated compressor for maximum mobility. It's very easy to use and exceptionally efficient.



**Indications**

- Myofascial trigger points
- Activation and loosening of muscle and connective tissue
- Tendon disorders
- Calcifications
- Acupuncture

**Facts and figures:**

- Application pressure:  
1 - 3 bar, 11 MPa
- Shock frequency: 1 – 11 Hz
- D-ACTOR® technology
- Compact design
- Built-in compressor
- Easy to carry



# Duolith

**COMBINED shockwave therapy system.**

## The right therapy for every patient

High-energy focused shockwave therapy (ESWT) and low-energy radial shockwave therapy (RSWT). The DUOLITH® SD1 is second to none in terms of the versatility and efficiency it offers. Modern physics, state-of-the-art technology and dynamic energy range. The combination makes the difference.



**Duolith Tower**



**Duolith T-Top**

## Indications

- Pseudarthrosis (ESWT)
- Myofascial trigger points, also deep seated trigger points (RSWT + ESWT)
- Activation and loosening of muscle and connective tissue (RSWT)
- Tendon disorders (RSWT)
- Calcifications (RSWT + ESWT)
- Acupuncture (RSWT)
- Skin disorders (PSWT)

## Facts and figures:

- Touch screen
- Built in compressor
- Integrated indication list
- Storage of patient data
- USB port
- FSWT (up to 0.55 mJ/mm2, standard)
- HE-FSWT (up to 1.24 mJ/mm2, optional)
- PSWT
- RSWT
- D-ACTOR® technology
- V-ACTOR® technology



# A unique therapy concept

## The complete treatment cycle!

We added three product groups to our ShockMaster® line that are very complementary with shockwave therapy and these will even improve the effectiveness of the therapy. Thanks to our expertise in this field we exactly know what a therapist needs in order to perform shockwave therapy in the most efficient way, this is the reason why we have created our unique ShockMaster® Total Therapy Concept.



① Imaging



③ Shockwave Therapy



② Cryotherapy

ShockMaster® offers a complete treatment cycle:

- ① For a clear image of the injury and its location, digital ultrasound scanning with
- ② For a more comfortable therapy and improved healing, cryotherapy with
- ③ To perform shockwave therapy
- ④ To follow up and prove effectiveness, digital ultrasound scanning with

**EchoMaster®**  
**CryoMaster®**  
**ShockMaster®**  
**EchoMaster®**

**DUS** stands for **Digital Ultrasound Scanning**, both medical practitioner and physiotherapist benefit when using this tool before applying shockwave therapy. The medical practitioner can diagnose very precisely, the physiotherapist will use it as visual biofeedback in order to precisely localize the treatment area and do the follow-up of the therapy.

The ultrasound imaging can be used by physiotherapists as Rehabilitative UltraSound Imaging (RUSI) which is defined as "...a procedure used by physical therapists to evaluate muscle and related soft tissue morphology and behavior during physical tasks... This includes providing feedback to the patient and physical therapist to improve clinical outcomes."

RUSI is a safe and cost effective method to enhance both the assessment and treatment of patients with motor control deficits like in lower back pain, incontinence,... or for shockwave therapy.

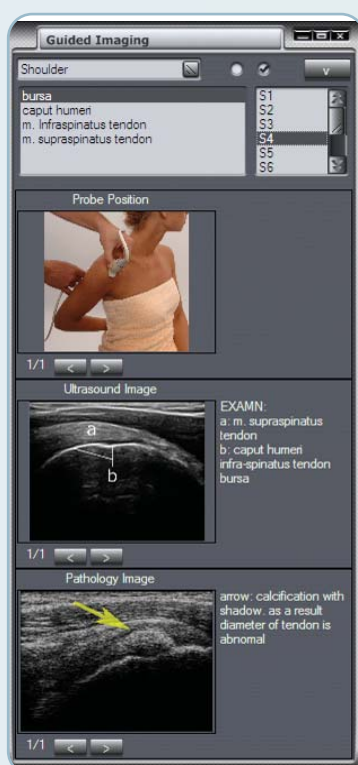
# DUS<sup>200</sup>

**The Laptop solution.**

**Portable Digital Ultrasound Scanning,  
including the unique Guided Imaging Software.**



## Guided Imaging Software



### Choose the scanning area

*Choose a joint to look at and more specifically which structure, such as caput humeri in the shoulder area. There will appear a list with all correct transducer positions. For every position, the software shows a picture to help you placing it correctly.*

### Standard ultrasound image

*The software shows you the ultrasound image you should see. Try to match it with the image of your patient.*

### Pathology ultrasound image

*This image shows abnormalities you could find for the corresponding transducer position and tells you how to recognize them.*

### Facts and figures:

- New and innovative Guided Imaging Software (GIS)
- Very easy to use
- Laptop based
- Clearview as an option
- Transducer frequency 2 ~ 10 MHz
- Transducers:
  - Linear 5 to 10 MHz
  - Convex 2 to 5 MHz
- Microanatomy imaging (tendon)

# DUS<sup>100</sup>

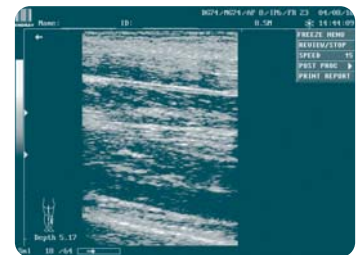
**Portable Digital Ultrasound Scanning.**

**The perfect entry level device to combine with shockwave therapy.**



## **Facts and figures:**

- A variety of multi-frequency transducers (2 ~ 10 MHz)
- Transducers:
  - Linear S 5/7.5/10 MHz
  - Linear L 5/7.5/10 MHz
  - Convex 2/3.5/6 MHz
- 10 MHz microanatomy imaging
- TSI (Tissue Specialty Imaging)
- XD-Engine for optimal imaging precision
- Userfriendly and easy to operate
- Ports for video and laser printer



*Microanatomy Imaging (Tendon)*



*Compact and portable*



*Mobile (option)*

# ICE<sup>CT</sup>

**Airflow Cryotherapy with biofeedback system.**

## **The new standard in cryotherapy**

Perform cryotherapy by using surrounding air with a biofeedback system, thereby ensuring a constant temperature on the treated spot. With CryoMaster® ICE-CT, Shockmaster® sets a new standard in cryotherapy. It doesn't just measure the temperature of the treated area, it also adjusts its airflow automatically to control the temperature and keep it constant!



*Infrared feedback system ensures  
controlled constant temperature*

*Nozzle support*



## **Efficient and effective therapy**

The possibilities for application of CryoMaster® ICE-CT are enormous. It offers maximum results for you and your patient when your objectives are the following:

- Analgesic : by slowing down the conduction through the nerves and reducing the sensitivity of the pain receptors
- Anti-inflammatory : thanks to the powerful vasoconstriction and the lower production of chemical mediators.
- Vasomotor : due to the efficient thermal shock, you get an alternation of vasoconstriction and vasodilatation (Hunting reaction)
- Myorelaxation : by reducing the reflex activity of the muscle





#### Facts and figures:

- Innovative biofeedback system (infrared technology)
- GTS (Guided Therapy System)
- Constant temperature on the treated spot
- Indication list
- Easy to use
- Hands free working; the therapist can perform another treatment at the same time
- Safe therapy thanks to the biofeedback system; no risk on burning injuries
- Airflow up to 1000 l/min in 10 levels
- Economic, no need for gas refill.
- 7 languages standard (English, French, German, Dutch, Spanish, Portuguese and Italian)



*Working hands free:  
thanks to the combination of the  
arm rest and the biofeedback system*

*Airflow pressure effect*



*Spray and stretch therapy:  
the ICE-CT allows you to easily perform  
the spray and stretch therapy  
recommended by Travell and Simons.*

*Easy to operate:  
thanks to its large LCD screen with backlight  
and GTS, the easy use of the control panel  
and the integrated indication list.*



# C200

Treatment couch

## The perfect couch for shockwave therapy

When a therapist performs shockwave therapy, it is very important that both the patient and the therapist are placed in the most comfortable position. That is the reason why we have designed CouchMaster® C-200 and therapy stool.

CouchMaster® C200 is an outstanding 2-section treatment couch with the upholstery in Chrome to match perfectly with the ShockMaster® design.



# SHOCKMASTER® UNIQUE AND PATENTED APPLICATORS

*“The results with the V-ACTOR® ‘Vibration Therapy’ handpiece in combination with radial shockwave therapy are such promising that we incorporate this new treatment extension more and more in our daily work with patients.”*

Olympic Sport Center, Frankfurt, Germany  
Herr Heckert, Physiotherapist,  
Sports Medical Institute, Frankfurt, Germany  
Dr. med Heinz Lohrer, Orthopaedic surgeon



## V-ACTOR® technology

The use of stimulating vibrations as a non-pharmalogical method to reduce muscular strain and eliminate trigger points is a scientifically recognized therapy approach. Vibration therapy increases the blood and lymph circulation in the extracellular matrix of the connective tissue and stimulates metabolic activity. The V-ACTOR® is perfectly suited to perform the Matrix Rhythmus Therapy.

The new unique and patented Vibration Therapy handpiece, recently launched after a one year testing period, operates at frequencies of up to 35 Hz and ensures optimal regulation of physiological muscle tremor.

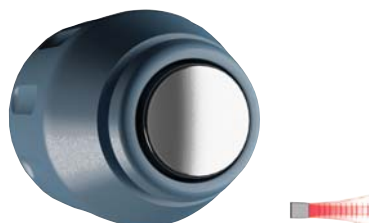
The V-ACTOR® applicator is designed for the localization and treatment of trigger and acupuncture points and is perfectly complementary to radial shockwave therapy. It is perfectly suited for muscle spasms and proprioception.

V-ACTOR® is optionally available for Masterpuls® 200 and Duolith® series.



## D-ACTOR® technology

The application of the D-ACTOR® technology to trigger points represents a new therapy approach. The combined use of radial shockwaves and vibrations allows effective local trigger point treatment as well as activation of muscle and surrounding connective tissue.





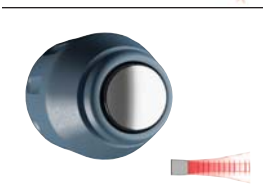

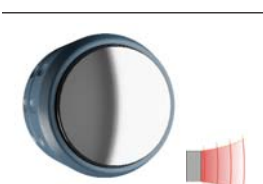




## Deep Impact® A unique strong and deep beam.

With this unique “combination” of 2 beams, it allows to focus the energy for a better efficiency on skindeep injuries by using low pressure, but also to go deep and deliver high energy density using high pressure.

Effective penetration depth: 0 - 60 mm

# SHOCKMASTER® ACCESSORIES

	<p><b>RSWT (Radial Shockwave Therapy)</b> Devices with radial shockwaves. The energy is spread over a large surface area. These devices produce a low to medium energy level.</p>
	<p><b>ShockMaster® 15 mm applicator:</b> Used for pain therapy in tendon disorders, calcified shoulder, heel spur, etc Effective penetration depth: 0 - 40 mm Also available in MA-X</p>
	<p><b>ShockMaster® 15 mm focus lens:</b> Used for enthesopathies such as tennis elbow, achilles tendon, patellar tendon, etc. Effective penetration depth: 0 – 20 mm</p>
	<p><b>ShockMaster® 6 mm acupuncture applicator:</b> Used for acupuncture shockwave therapy. Effective penetration depth: 0 - 40 mm Also available in MA-X</p>
	<p><b>ShockMaster® Deep Impact® applicator:</b> Using low pressure it's used for skin-deep injuries meanwhile using high pressure it's used for deep seated locations and for high energy requirements (e.g. calcifications). Effective penetration depth: 0 - 60 mm</p>
	<p><b>ShockMaster® D-ACTOR® I, 20 mm:</b> Combination of radial shock waves and vibrations. Used for trigger point therapy, activator of muscle- and connective tissue. Effective penetration depth: 0 - 50 mm Also available in MA-X</p>
	<p><b>ShockMaster® D-ACTOR® II, 35 mm:</b> Combination of radial shock waves and vibrations. Used for trigger point therapy, activator of muscle- and connective tissue. Perfectly suited for bigger muscles due to its big size. Effective penetration depth: 0 - 50 mm</p>
	<p><b>Protection cap applicator (50 pieces):</b> These protection caps function as an "impedance adaptor", softening the shock waves before they are transmitted to the tissues to be treated. This is ideal for sensitive patients.</p>
	<p><b>Revision kit: Metal or MAX technology</b> The RSWT handpiece is subject to mechanical stress. In the long term, this stress will cause wear. For this reason, the handpiece needs to be revised at regular intervals (as a rule, after an estimated 1.250.000 hits). This revision kit is double, which allows an average of 2.500.000 hits.</p>

	<p><b>Prokit</b></p> <p>In order to benefit from the treatment possibilities with metal applicators, we have designed a ShockMaster® RSWT prokit. This kit allows the therapist to replace the unique MA-X technology by metal applicators. By doing so, you may use the wide range of metal applicators.</p> <p>Contents: 15 mm applicator metal, D-ACTOR I® 20 mm metal and revision kit metal.</p>
	<p><b>ESWT (Extracorporeal Shockwave Therapy)</b></p> <p>Devices with a focused shockwave. Maximum energy is reached at a specific focal point in the body. These devices produce a medium to high energy level. It's available in two versions: F-SWT up to 0.55 mJ/mm<sup>2</sup> and HE-F-SWT up to 1.24 mJ/mm<sup>2</sup>. Only for Duolith.</p>
	<p><b>PSWT (Planar Shockwave Therapy)</b></p> <p>In considering the application of ESWT to wound care, the technology must be adapted into a wide focus treatment area. To generate planar shockwaves, the reflector used in the PSWT handpiece is made of a generalized parabolic reflector. Only for Duolith.</p>
	<p><b>Vibration Therapy</b></p> <p>The V-ACTOR® applicator is designed for the localization and treatment of trigger and acupuncture points and is perfectly complementary to radial shockwave therapy. It is perfectly suited for muscle spasms and proprioception. The V-ACTOR® is absolutely perfect to perform Matrix Rhythmus Therapy. Only for MP200 and Duolith series.</p>
	<p><b>F-Meter:</b></p> <p>The F-Meter is a very precise and sensitive pressure gauge that measures and documents pain points before and after each treatment. The patient receives visible proves that the treatment is working.</p>
	<p><b>Mobil ShockMaster®:</b></p> <p>Closed type trolley for oil compressor.</p> <p>Other Mobils available.</p>
	<p><b>ShockMaster® cover for couch</b></p> <p>In stretch material and chrome colour, in order to match with your treatment support with the ShockMaster® design, to protect the upholstery, to give a warm feeling to the patient and also for hygienic reasons.</p>
	<p><b>Carrying case:</b></p> <p>Enables you to move the device easily and in complete safety. Available for MP series and Duolith T-Top.</p>
	<p><b>Contact gel</b></p> <p>For the optimal transmission of shockwaves into the body you must apply contact gel on the treated area. Available in bottles of 500 ml and 5 l.</p>
	<p><b>Trigger point posters</b></p> <p>Beautiful explanatory poster (70 x 50 cm) for Torso and Extremities, these illustrate the most important trigger points with the referred pain they may produce.</p>

# SHOCKMASTER® PRODUCT RANGE

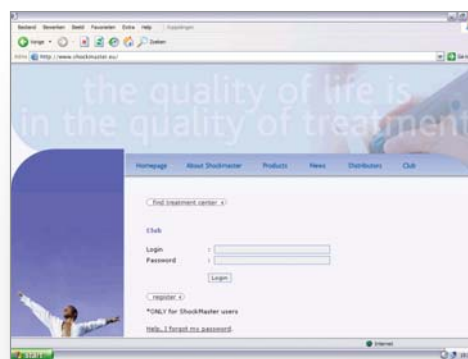
	MP50	MP100 Energy	MP100 Oil	MP200 Oil
<b>Performance:</b>				
Frequency	1-11Hz	1-15 Hz	1-15 Hz	1-35 Hz
Pressure	1-3 bar	1-4 bar	1-4 bar	1-5 bar
Energy density, max.	0.17 mJ/mm2	0.22 mJ/mm2	0.22 mJ/mm2	0.28 mJ/mm2
Positive output pressure	11MPa	14.3 MPa	14.3 MPa	18,5 MPa
Total weight incl. compressor	9 kg	20 kg (6kg + 14 kg compr.)	28 kg (6kg + 22 kg compr.)	28 kg (6 kg + 22kg compr.)
Compressor	Integrated	External (Energy II)	External (Oil)	External (Oil)
USB	No	No	No	Yes
LAN (not isolated)	No	No	No	Yes
Patients data memory	No	No	No	Yes
Indication list	No	No	No	Yes
Mobility	Very easy to carry	Very high	High	High
<b>Controls:</b>				
Control panel	LED display	LED display	LED display	LCD Color Touch Screen
Pulse release	Electronical	Electronical	Electronical	Electronical
Handpiece on/off function	Electronical	Electronical	Electronical	Electronical
<b>Accessories:</b>				
Classic, 15 mm head MA-X	Standard	Standard	Standard	Standard
RSWT Prokit	Optional	Optional	Optional	Optional
Classic, 15 mm head	Optional	Optional	Optional	Optional
D-ACTOR I, 20 mm	Optional	Optional	Optional	Optional
D-ACTOR II, 35 mm	Not Applicable	Optional	Optional	Optional
Deep Impact	Optional	Optional	Optional	Optional
Focus, 15 mm head	Optional	Optional	Optional	Optional
Acupuncture head, 6 mm	Optional	Optional	Optional	Optional
Mobil 700	Optional	Optional	Not Applicable	Not Applicable
Mobil ShockMaster	Optional	Optional	Standard	Standard
Tilting plate	Optional	Optional	Optional	Standard
V-ACTOR	Not Applicable	Not Applicable	Not Applicable	Optional
ESWT	Not Applicable	Not Applicable	Not Applicable	Not Applicable
PSWT	Not Applicable	Not Applicable	Not Applicable	Not Applicable
Carrying case for mobile use	Optional	Optional	Not Applicable	Not Applicable
<b>Indications:</b>				
Pain therapy	+++	+++	+++	+++
Supercial tendon disorders (Tennis elbow, golf elbow,...)	+++	+++	+++	+++
Deep tendon disorders, Calcified shoulder	+	++	++	+++
Myofascial trigger point therapy	++	+++	+++	+++
Activation of muscle and connective tissue	++	+++	+++	+++
Muscle	+	+++	+++	+++
Biomechanical therapy	-	-	-	+++
Acupuncture shockwave therapy	+++	+++	+++	+++
Vibration therapy	-	-	-	+++

# ShockMaster® Club

**Join the Club and make  
the most of your  
ShockMaster®**

All of our customers have the unique opportunity to join the virtual ShockMaster® Club at **[www.shockmaster.eu](http://www.shockmaster.eu)**

Registration is free of charge and will give you access to the latest in literature, information about fairs, congresses, seminars, and a select array of marketing tools.



**[www.shockmaster.eu](http://www.shockmaster.eu)**

In addition, there is a forum where ShockMaster® users can share ideas about treatments, results, parameters, etc. Upon subscription, you will get a FREE marketing package.



ShockMaster® is a division of GymnaUniphy

Your dealer